



Projects Seminar 2015 – Madrid

Programme



Location

Residencia de Estudiantes (Madrid)



Date

18-20 March 2015

Purpose and concept

The CHIST-ERA Projects Seminar 2015 brings together the projects funded in the framework of CHIST-ERA, and the funders (the research funding organisations in CHIST-ERA). The main objective is to contribute to the exchanges between the projects, and to facilitate the follow-up of the projects by the funders and the review experts. In this context, the objectives of the seminar are:

- Remind the project partners of the CHIST-ERA Follow-up objectives and process and more generally about the expectations of the funders;
- Gather impression about the funded projects, meet in person and listen to the researchers presenting their projects;
- Strengthen the scientific communities related to the topics of the CHIST-ERA calls and support effort toward interdisciplinary research.

As a further objective, the seminar contributes to the assessment of CHIST-ERA calls.

The programme is divided in call topic sessions which are ordered according to thematic proximity in order to encourage participation to several sessions. All participants are invited to the social event on the evening of the both days.



chist-era

Programme

	March 18		March 19		March 20	
08:30			Presentation of CHIST-ERA		Presentation of CHIST-ERA	
09:00			D2K Call 2011	CAMOMILE	G-ICT Call 2011	E-CROPS
10:00				MUCKE		GEMSCLAIM
11:00			READERS	REFRAME	SMARTER	STAR
11:30			<i>Coffee pause</i>		<i>Coffee pause</i>	
12:30	<i>Welcome coffee</i>		D2K Call 2011	uComp ViSen	HDC Call 2013	DIONASYS DIVIDEND HPDCJ
13:00	Presentation of CHIST-ERA					
13:30	QIFT Call 2010	CQC DIQIP	AMCE Call 2013	AdaLab ALOOF COACHES	General discussion & conclusion	
14:00					Follow-up expert group meeting*	
14:30		HIPERCOM QINVC	IUI Call 2012	eGlasses IMOTION JOKER	<i>End of day 3, end of meeting</i>	
15:30	<i>Coffee pause</i>		<i>Coffee pause</i>			
16:00	QIFT Call 2010	QScale R-ION	C3N Call 2012	CONCERT DISEDAN MACACO		
17:00		SSQN	BASCC Call 2010	PNEUMA		
17:30	General discussion & conclusion		General discussion & conclusion			
18:00	Follow-up expert group meeting*		Follow-up expert group meeting*			
19:00	<i>End of day 1</i>		<i>End of day 2</i>			
20:00	<i>Networking dinner</i>		<i>Networking dinner</i>			

Timing per project: Calls 2010 and 2011 (30'); Calls 2012 and 2013 (20')

* For research funding organisations and review experts only

Location of seminar and practical information

Seminar venue: Madrid, Residencia de Estudiantes

The seminar takes place in Madrid, Spain, and is organized by MINECO, the Ministry of Economy and Competitiveness, CHIST-ERA partner.

Madrid is the largest city of Spain. The population of the city is roughly 3.3 million and the entire population of the Madrid metropolitan area is calculated to be around 6.5 million. The city is located on the Manzanares River in the centre of both the country and the Community of Madrid. As the capital city of Spain, seat of government, and residence of the Spanish monarch, Madrid is also the political, economic and cultural centre of Spain. The seminar is hosted at:

Residencia de Estudiantes. <http://www.residencia.csic.es/en/pres/presenta.htm>

Pinar, 21-23. (28006) Madrid, Spain.

Tel.: +34 91 563 64 11 Fax.: +34 91 564 38 90

The meeting will be at the “*Residencia de Estudiantes*”. This place was a key and beloved point for the cultural history of Spain at the beginning of the 20th century, and it has been declared European Heritage (2007). Currently the “*Residencia*” belongs to the Spanish National Research Council –CSIC- (www.csic.es), and it shares the campus area with the administrative CSIC headquarters and some CSIC research institutes. (See an overview in maps 1-2).

CHIST-ERA meeting attendants can be accommodated at the “*Residencia de Estudiantes*” according to their wishes. The place proposes specific room booking rates for the attendees of the seminar (for a single room: 65€/night and 105€/night for double room). If you are interested please send an email to reservas@residencia.csic.es with the following information: Subject: CHIST-ERA Projects Seminar, Full name and occupation, and dates. The deadline to accept reservations is February 28.

Note: A few meeting rooms are available to organise project consortium meetings in parallel to the seminar on March 18-20. If you wish to plan such a meeting before or after your topic session, inform the seminar organisers by specifying it in your registration form (see registration form available online on CHIST-ERA website: <http://www.chistera.eu/projects-seminar-2015>).

Other hotels

Other hotels are located nearby; we suggest some options near “Residencia de Estudiantes”:

- Hotel Intercontinental: <http://www.ihg.com/intercontinental/hotels/us/es/reservation>
- Hotel Melia Galgos: <http://www.melia.com/es/hoteles/espana/madrid/melia-galgos/index.html>
- Hotel Miguel Angel: <http://www.hotelmiguelangel.com/>
- Hotel NH Zurbano: <http://www.nh-hoteles.es/hotel/nh-madrid-zurbano>
- Hotel NH Abascal: <http://www.nh-hoteles.es/hotel/nh-collection-madrid-abascal>
- For extra information, the official tourism website is: <http://www.esmadrid.com/en/>

How to reach the seminar

Residencia de Estudiantes has a central location in the center of Madrid close to the business, shopping, convention, congress, culture and entertainment centers.

Getting there

By plane:

Nearest airport is Barajas (Madrid International Airport). Note that Barajas airport has four terminals (T1-T4). The new terminal T4 is relatively far from T1-T3, but there are connection buses every 5-10 min. From all terminals you can take a taxi, a bus or the underground (line 8) to the city centre.

By taxi:

The taxi run may cost 30-40 €, depending on the departure airport terminal and the traffic conditions. In normal conditions the trip shouldn't be longer than 20-25 min to the Residencia. <http://www.aerpuertomadrid-barajas.com/transportation/madrid-airport-bytaxi.htm>

By metro:



Taking the Metro (<http://www.metromadrid.es/en/index.html>) may take longer, but it is certainly an easy and very cheap solution (map 3). From Barajas to the Residence it might take around 50 min including walking. There is a fee of 3€ from/to the airport besides the normal metro ticket. Take the underground (line 8, pink). Transfer at “Nuevos Ministerios” to Line 6 (grey line). Get out at “República Argentina” metro station. Walk 5 min as indicated at the map



chist-era



Within the city

The nearest metro station to the *Residencia* is “República Argentina” (line 6, exit “Juan de la Cierva”). Other close-by stations are “Nuevos Ministerios” (lines 6, 8, and 10, and suburban train) and “Avenida de América” (lines 4, 6, 7, and 9). Also, there are buses 16, 19 and 51 to the city centre.

Train

Both “Chamartin” and “Atocha” stations are located in the city centre and well connected with the suburban and underground network.

Important: Note that the official address of the “Residencia de Estudiantes” is Calle del Pinar nº 23, which is in fact the back entrance to the whole complex. Ask better the taxi driver for the Consejo Superior de Investigaciones Científicas (CSIC). The main entrance is in Calle de Serrano nº 117. Guardians at the main gate will allow the taxi to reach the Residencia through the CSIC headquarters.

Contact information

The seminar is organised by CHIST-ERA member MINECO. For any queries please contact: Federico Mompeán & Alfio Rodeghiero (era-ict@mineco.es).



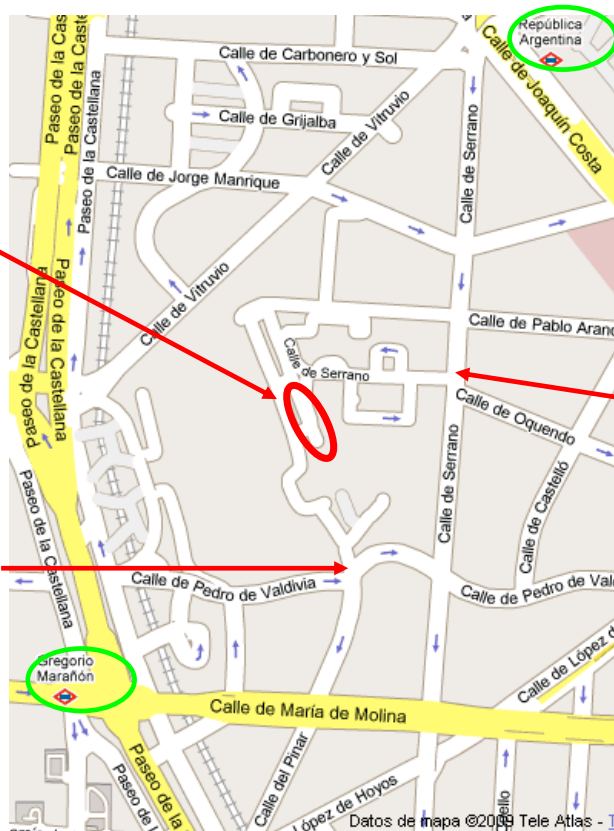
chist-era



MAP 1

"Residencia de Estudiantes"

Back entrance:
Calle del Pinar
nº 23



Main entrance to the
"Consejo Superior
de Investigaciones
Científicas -
CSIC" (National
Research Council)
headquarters: Calle
de Serrano nº 117

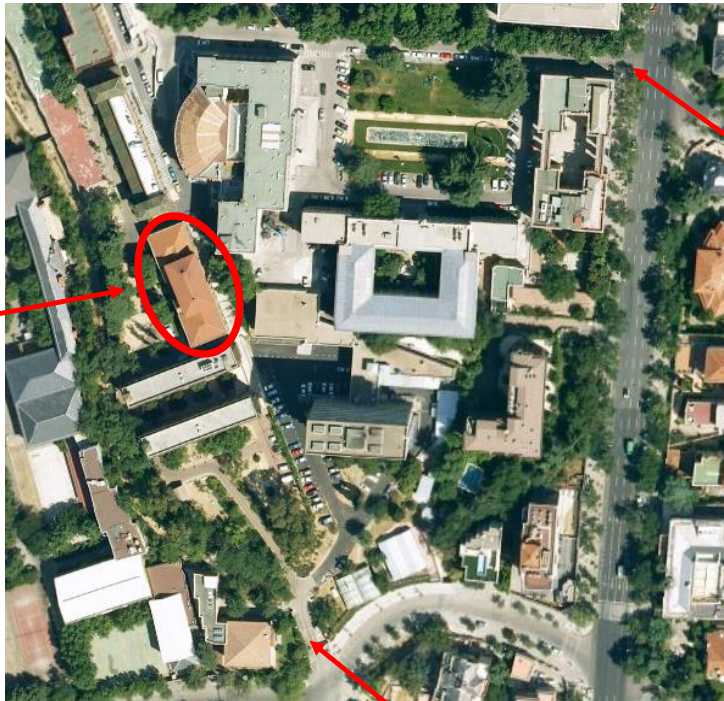




chist-era



MAP 2



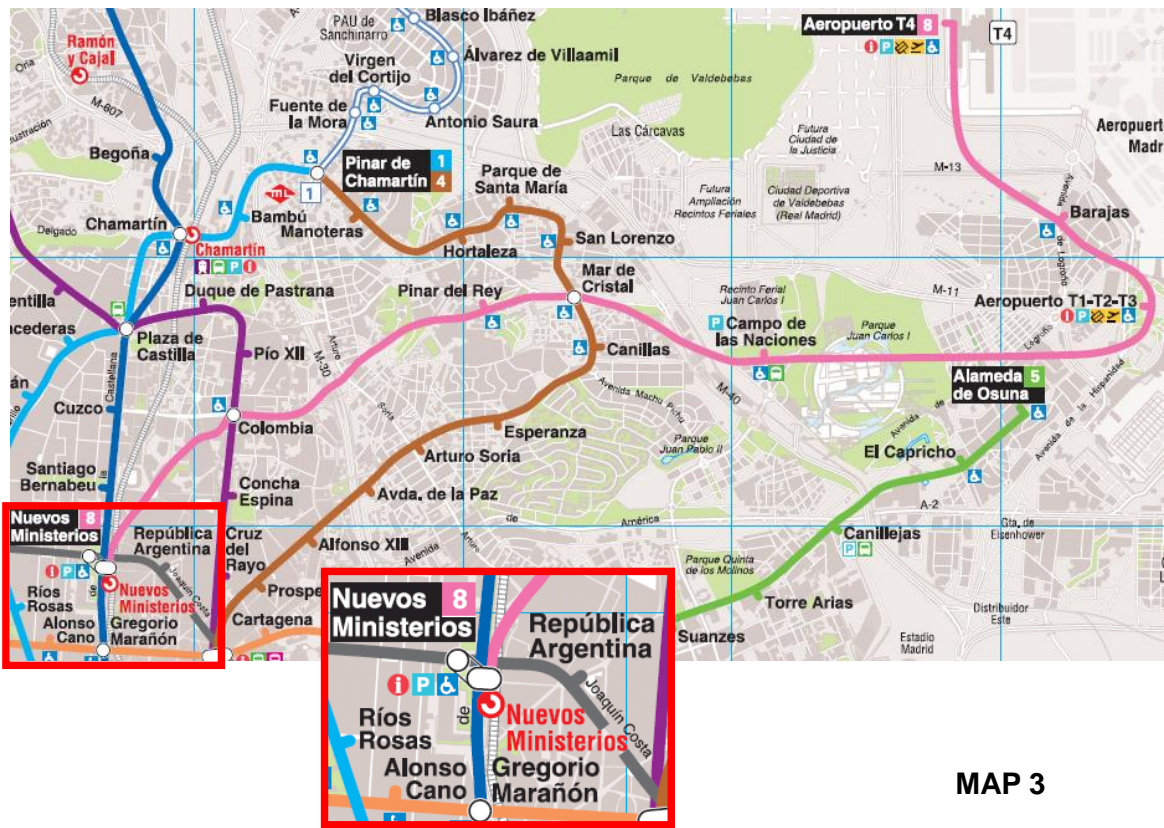
"Residencia de Estudiantes"

Main entrance to the "Consejo Superior de Investigaciones Científicas - CSIC" (National Research Council) headquarters: Calle de Serrano nº 117

Back entrance: Calle del Pinar nº 23



chist-era



MAP 3